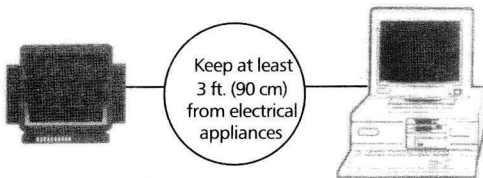


## Operating Distance / Noise

RF interference potential with electrical appliances such as radios, personal computers, cordless telephones and T.V.s. Keep the Electra™ Lamp at least three feet (90 cm) away from such devices.



**CAUTION**  
RISK OF ELECTRIC SHOCK  
DO NOT OPEN.



**CAUTION:** This is an electric lamp - not a toy.  
No user serviceable parts inside base, do not open.  
Use indoors only. Keep metal objects away from lamp.

ART-LAMP  
Electra® Plasma Lamp  
INPUT: AC120V 60Hz 15 WATTS

**LumiSource, Inc.**  
MADE IN CHINA

**CAUTION!** SHOCK HAZARD, Do not open base or tamper with electrical power source. No user serviceable parts inside.

### Operation/Safety

- **Shock Hazard** if the base is opened or tampered. Also, keep metal objects away from the lamp as metallic pieces can induce electric current from the device. There are no user serviceable parts inside the base or glass container. Please return the lamp to your retailer in case of damage.
- **Fragile Glass** containers may break if extreme caution is not taken in handling and unpacking the Electra™ Lamp from its carton. If the glass sculpture is broken, repack it and return it to the retail store where you purchased it. **DO NOT OPERATE THE ELECTRA™ LAMP ONCE THE CONTAINER HAS BEEN BROKEN.**

**Warning!** Do not place two Electra™ lamps within 3 ft. (90 cm) of each other. Possible interference may occur.

## The Tornado Electra™ Lamp

Your Electra™ Lamp features electric charges passing through a blend of inert rare gases to create ever-changing arcs of lightning. Each glass container is made of hand-blown blue or purple glass and can include combinations of blue, green and red phosphor coatings to enhance the brilliance of the lightning effect.

### Features

- Beautiful hand-made glass sculpture containers.
- Ribbons of lightning arcs fill the glass chamber, interacting with your fingers and hand when you touch the glass surface.
- Turns on instantly with low voltage power supply.

## LumiSource, Inc. Limited Warranty

**WHAT IS COVERED:** Any defect in materials and workmanship within 90 days of date of purchase.  
**WHAT WE WILL DO:** During the warranty period LumiSource, Inc. will cover the cost of replacement for any product defects.

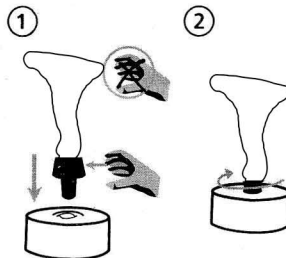
**LIMITATIONS: IMPLIED WARRANTIES, INCLUDING THOSE OF FITNESS FOR A PARTICULAR PURPOSE AND MERCHANTABILITY (AN UNWRITTEN WARRANTY THAT THE PRODUCT IS FIT FOR ORDINARY USE), ARE LIMITED TO 90 DAYS FROM DATE OF PURCHASE. WE WILL NOT PAY FOR LOSS OF TIME, INCONVENIENCE, LOSS OF USE OF YOUR PRODUCT OR PROPERTY DAMAGE CAUSED BY YOUR PRODUCT OR ITS FAILURE TO WORK, OR ANY OTHER INCIDENTAL OR CONSEQUENTIAL DAMAGES INCLUDING PERSONAL INJURY.**

**WHAT WE ASK YOU TO DO:** To get warranty service for your product, you must provide proof of purchase. Within 90 days of the date it was purchased, return the product to your place of purchase for immediate replacement.

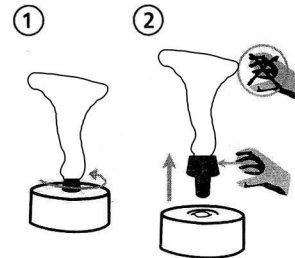
**WHAT THIS WARRANTY DOES NOT COVER:** This warranty does not cover defects resulting from accidents, damage while in transit to our service location, alterations, unauthorized repair, failure to follow instructions, misuse, fire, flood and acts of god.

**THIS LIMITED WARRANTY IS THE ONLY ONE WE GIVE ON YOUR PRODUCT AND IT SETS FORTH ALL OUR RESPONSIBILITIES REGARDING YOUR PRODUCT. THERE ARE NO WARRANTIES WHICH EXTEND BEYOND THE DESCRIPTION SET FORTH IN THIS BROCHURE.**

TO ASSEMBLE



TO DISASSEMBLE



DO NOT  
TWIST LAMP  
INTO BASE  
BY HOLDING  
THE GLASS.